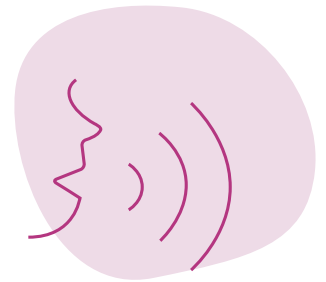
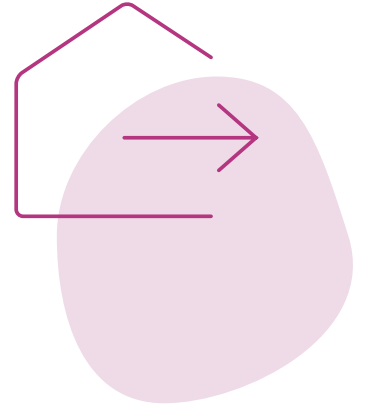
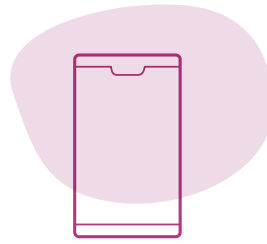


#my



connected home

Take a tour of our **connected home**

# Why should you upgrade to a connected home?



**1 Stay in touch with your home** wherever you are to improve comfort, while saving energy



**2** Because **9 out of 10** Australians own a **smartphone\***



To adapt our homes to our lifestyles: **5.6 million** Australians own a **smart speaker\*\***



To enjoy a seamless user experience, with **simple solutions** for use and installation



**5** Because **respect for privacy** is a fundamental value for **Legrand**

Stay connected with Legrand

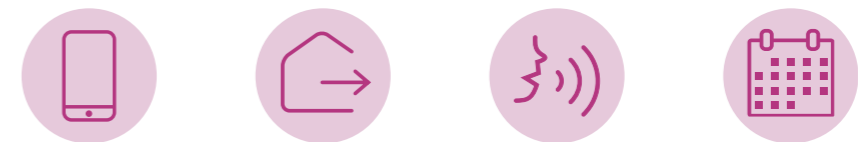
Your home can be **connected simply** with Legrand and Netatmo, a Legrand brand

The connected world we live in is now a reality: more than 9 out of 10 Australian's own a smartphone and over 5.6 million own a smart speaker. Legrand is in tune with your desires, and our innovations offer you solutions that are increasingly simple, intuitive and connected.

Legrand has therefore worked alongside Netatmo to develop a wide range of solutions which can be used to connect your home simply, whether it's a house or an apartment.

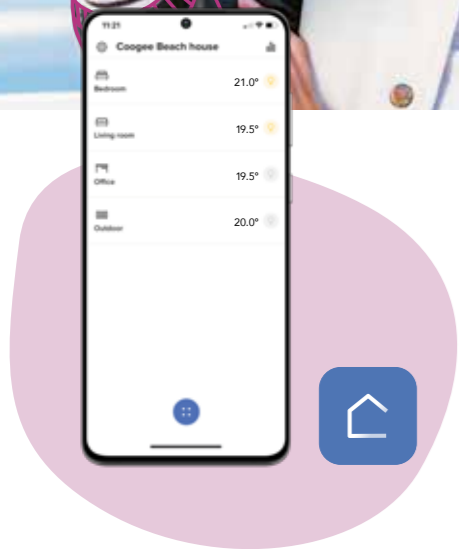
You can control your lights, roller shutters, electrical appliances or heating locally, remotely or with your voice, greet your visitors, and monitor your home. The Home + Control app simplifies everyday life with customised schedules and scenarios and consumption monitoring.

To see how our connected solutions are evolving, please visit our website: [legrand.com.au](http://legrand.com.au)



\* Source: Deloitte 2019 Mobile Nation Survey  
 \*\* The Infinite Dial Australia, 2021

Wherever you are, **control your connected home** and receive notifications



**Home + Control** is an intuitive app jointly developed by **Legrand** and **Netatmo** to control **Excel Life Smart, Living Now with Netatmo and Arteor™ with Netatmo**. It allows you to control your lights, wired or radio-controlled roller shutters, heating and electrical appliances remotely. With **Home + Control**, you can customise your preset life scenes, monitor your consumption and receive a notification if there is a power cut. The app is free of charge and is available from the App Store and Google Play.

In your everyday life, **customise** your life scenes and preserve your **peace of mind**



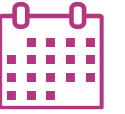
**Define** and **customise** times that are important to you. Create your own scenarios by activating different functions simultaneously. "When I leave home, I activate the **"Away"** life scene which I have customised. All the lights switch off, selected shutters close and my power outlets are set to standby".

Just ask, and your home **grants your wishes**



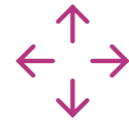
Your home grants your wishes. Control your installation with voice, **using the voice assistant of your choice** on a mobile device or smart speaker. You can control **your lights, electrical appliances, your heating or your shutters.**

Schedule actions to make your home more comfortable and control your **energy consumption**



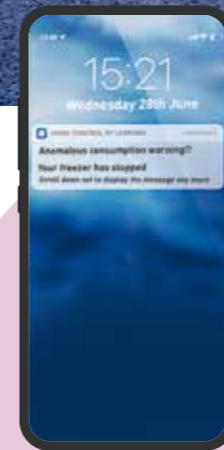
**Enhance your comfort by scheduling** everyday actions in the Home + Control app such as the time to open or close your shutters or switch on your lights, heating or cooling. **Adapt when the heating switches on and off** to your lifestyle or **schedule charging your electric vehicle** during off-peak times so as to use the minimum amount of electricity. **Comfort and energy savings go hand in hand!**

**Move** your wireless switches around as you want



Control your switches and power outlets using wireless switches. These extra-slim switches can be **repositioned using the adhesive pads provided**. You can add a control point wherever you want without the need of additional wiring or an electrician. "I'm rearranging my room and I can move my switches to suit my needs".

My house **communicates with me**



Receive notifications **on the basis of your customised requirements**: for example, define a consumption threshold and get an alert if this threshold is reached. You can also **set safety alerts** for the cameras, opening detectors for doors and windows, or smoke detectors. "I can be alerted in real time if an intruder enters my home".

# Discover solutions that make life easier

## Your simply connected home

With **Legrand** products, you can have peace of mind. Your home becomes somewhere you feel at ease, a real extension of you and your family, well and truly "your place".

Whether for your lights, your heating, your door entry system or your cameras, take control of your home simply and intuitively.

"I want to control my home remotely"

p. 10

**CONNECTING MY HOME**

"Lights on, please!"

p. 12

**LIGHTING**

"Open living room shutters, please!"

p. 16

**SHUTTERS**

"Set the temperature to 22°C please!"

p. 19

**WELL BEING**

"I can track my consumption remotely."

p. 24

**MANAGING CONSUMPTION**

"You can leave the parcel with my neighbour!"

p. 28

**GREETING PEOPLE**

"Person detected in the garden"

p. 32

**SECURITY**

"I want to control my home remotely"



**CONNECTING MY HOME**

## How do I get started with a connected installation?



Because every customer is different, we can offer you a range of options to make your home connected.

The "with Netatmo" starter pack allows you to connect your lighting, roller shutters and electrical appliances, and then control them locally, remotely or with your voice, using the voice assistant of your choice.

The gateway acts as an interface between your WiFi modem and the connected wired products. Starter packs are available with the gateway either as a wall mount or module for load centre, in order to fit both new-builds or renovation projects. One Starter pack is enough for one house.

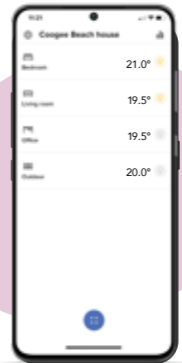


### > Arteor™ with Netatmo or Excel Life Smart starter packs

Simply replace a conventional wall outlet with the gateway to connect your home and maintain harmony with your power outlets and switches.

By adding the gateway power module in your electrical panel, you can discreetly create a connected home. You then simply need to add the wired products of your choice to complete your installation.

The app allows me to control my lights, roller shutters, heating and electrical appliances remotely. I can also customise life scenes, schedule operation of my appliances, track my consumption in detail and set alerts on my smartphone.



The Home + Control app is free of charge and available from the App Store and Google Play.





"Lights on, please!"

LIGHTING

UPGRADE YOUR LIGHTING TO SMART

I can switch the lights on and off or dim them in each room or the whole house from a smartphone with the Home + Control app.

I can also control my lighting with my voice using voice assistants.

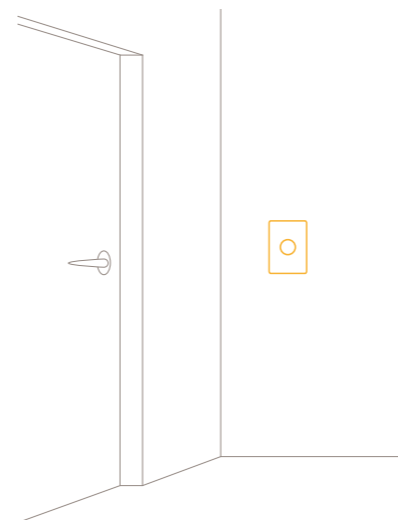
works with Hey Google | Works with Apple HomeKit | works with alexa

No matter what your lighting installation type, **make it "smart" by replacing your existing switches with connected switches** with dimmer option or by adding wireless switches: create a two-way switch, centralise lighting.

You can also **integrate lighting management in the schedules** (presence simulation) **and in life scenes with other products in your home**, such as roller shutters and heating, to make your everyday life easier.

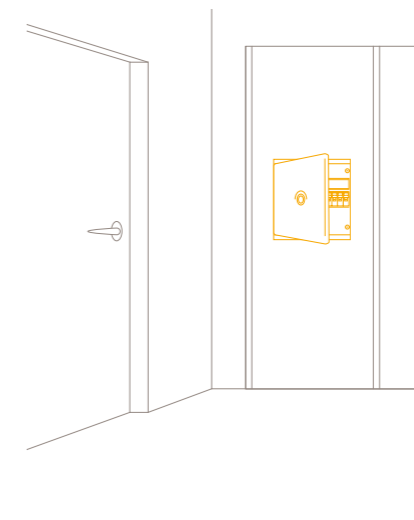
Solutions on the wall

Harmonise your switches and power outlets



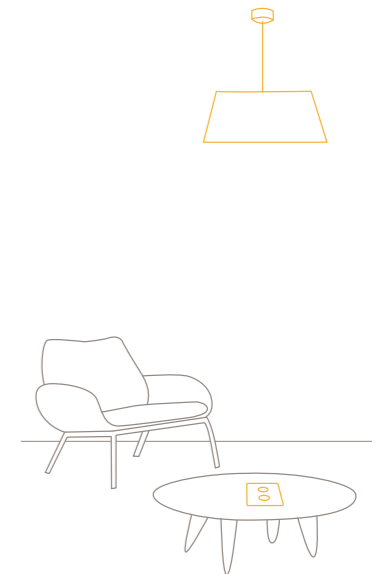
Solutions in the electrical panel

Control several lights



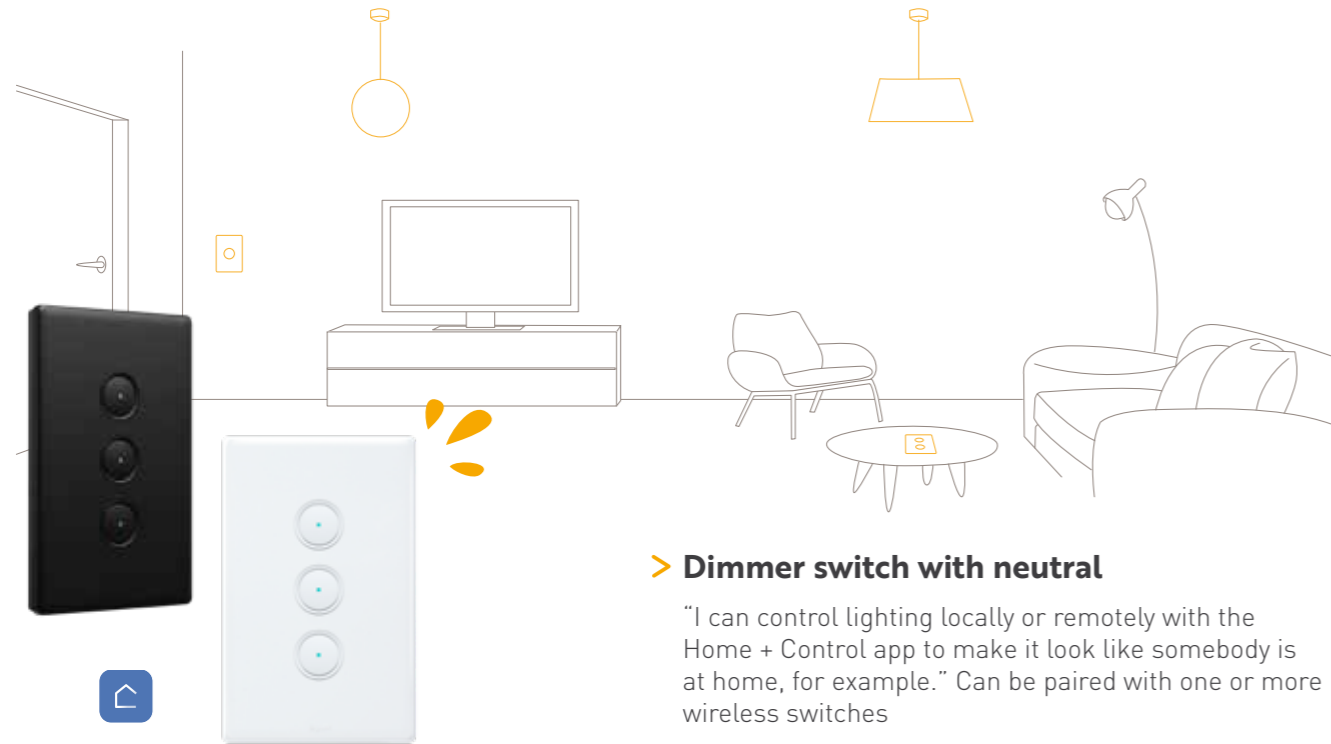
Solutions on luminaires

Make existing lights "smart"



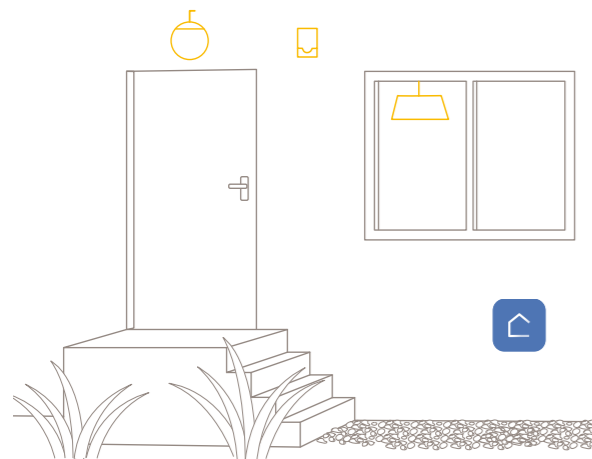


Do you want to control your lighting remotely **from wall controls?**



> **Dimmer switch with neutral**

"I can control lighting locally or remotely with the Home + Control app to make it look like somebody is at home, for example." Can be paired with one or more wireless switches

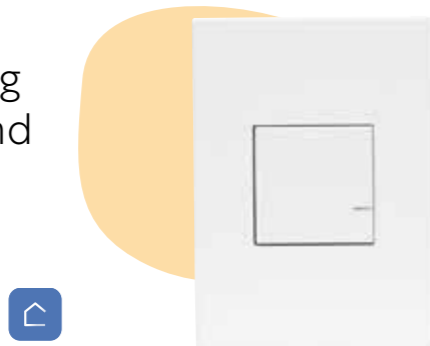


> **Wireless motion sensor (IP 44)**

Can control one or more wired products. "For example, when I get home my sensor, placed on the wall outside the house, switches on the porch light and the lights in my hallway." Also ideal for adding a control point in a place that is hard to access.



Are you changing your **switches** and you don't have a neutral in the installation?



> **Switch with dimmer option without neutral**

To control one or more lights. Compatible with any type of lamp, including dimmable LEDs. "I can configure the dimmer option in the Home + Control app and I can pair my switch with one or more wireless switches."

Do you want **to control several lights remotely** without changing your installation?



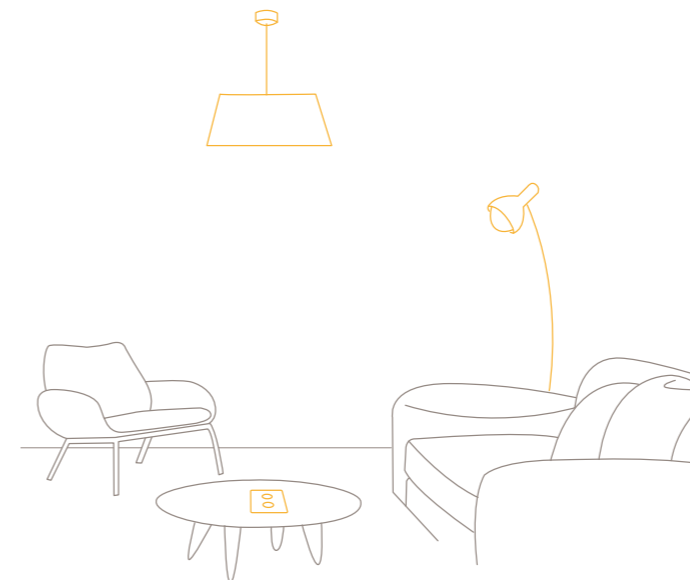
> **CX<sup>3</sup> with Netatmo connected latching relay**

This completes a connected installation or replaces an existing latching relay in your distribution board.

"I can switch on all the lights in my hallway in a single action or simulate a presence when I'm away from home. I can also track consumption in the app or incorporate my lights in my customised Sleep scenario."

Would you like to make your **lighting connected?**

I can make a light "smart" and add a lighting point without pulling wires.



> **Lighting micromodule**

For installation in a wall or ceiling cavity, close to a lamp. Can be controlled by one or more wireless switches.



Would you like to add **wireless switches?**



> **Extra-slim double wireless switch**

Can be used to add a control point without pulling wires, and to control two connected lighting and switch circuits.

Can be positioned and repositioned wherever you want using the adhesive pads provided.

"Open living room shutters, please!"



## SHUTTERS

## OPEN AND CLOSE YOUR SHUTTERS SIMPLY WITH YOUR VOICE



I can control opening and closing of my shutters simply from a smartphone with the Home + Control app.



You can control your **automated roller blinds or shutters with your voice** using voice assistants or via the Home + Control app.

You can **customise your schedules and** Home/Away or Wake up/Sleep **life scenes** by combining management of your shutters with lighting, heating and electrical appliances in the Home + Control app.

Simulate your presence even when you're not at home.

### Do you have **wired shutters**?

#### > **Connected roller shutter switch**

For standard types of motor with electronic or mechanical stop.



#### > **Roller shutter wireless switch**

"I can centralise control of my shutters without pulling wires and without damaging the walls."



#### **Extra-slim**

Can be positioned and repositioned wherever you want using the adhesive pads provided.

#### > **Micromodule for roller shutters**

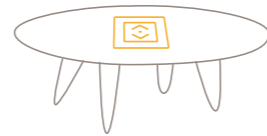
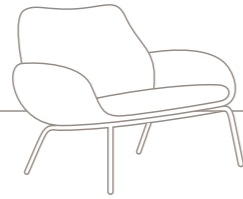
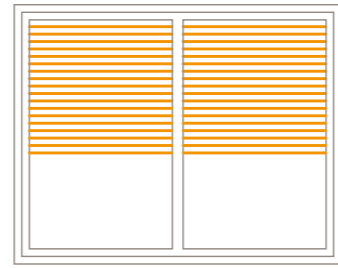
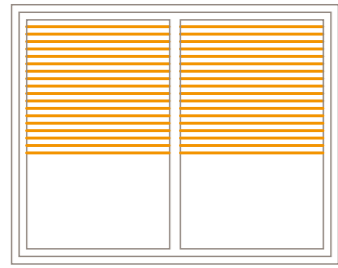
"I can make an electric shutter "smart", without pulling wires."

Installed in the loft or in the shutter head rail during modernisation of an existing shutter without damaging the walls.

"I can then control my shutters with a roller shutter wireless switch."



Do you have **radio-controlled shutters?**



somfy®



> **Somfy Connexion Window RTS**

"I can control my roller blinds, curtains and awnings with Somfy RTS motorisation via the Home + Control app and pair them with Arteor™ with Netatmo®, Excel Life Smart and Living with Netatmo® scenario controls."

The Connexion Window RTS hub can be commissioned so that I can control Arteor™ with Netatmo products and create scenarios.

"Set the temperature to 22°C please!"



WELL BEING

# ADAPT YOUR **HEATING** TO YOUR **DAILY ROUTINE**




I can create schedules to suit my lifestyle and control my heating remotely with the Home + Control app.

I can also control my heating with my voice using voice assistants.





No matter which type of heating you have, you can control it remotely using the Home + Control app or via your voice assistants.

## Do you have **heated towel rails**?

The connected cable outlet is installed in place of an existing cable outlet



### > **3000 W connected cable outlet**

The cable outlet operates in ON/OFF mode for towel rail heaters or to control electrical appliances. Can be controlled via app, or by a wireless light switch, integrated in schedules with other products for night mode for example.

"I can also track the consumption of my appliances directly in the Home + Control app."

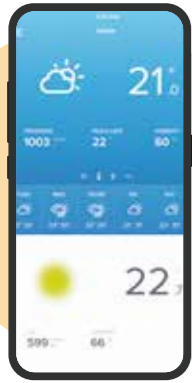


### > **Smarter with Netatmo\* connected thermostat**

Stylish and minimalist, the Smarter with Netatmo connected thermostat is available in white and black, and also in two versions: flush or surface-mounting.

"I can activate the Boost function in order to reach the desired temperature quickly."

## View temperatures wherever you are



"All the data is accessible at any time of day from my smartphone screen."

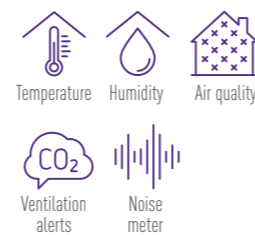


### > Netatmo Smart Weather Station

"The Weather Station offers me real-time weather data measured right in front of me, using the sensors in the outdoor module."



"I can view the log of my indoor and outdoor data as graphs in the Netatmo Weather app. I can also see the weather forecast for the next few days."



### > Netatmo Additional Indoor Module

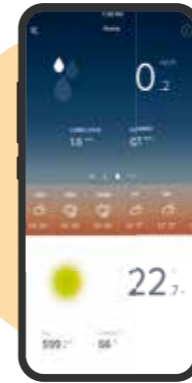
Add indoor modules to your weather station. These measure the air quality data and the noise level in your home.

"I receive an alert if the indoor pollution increases and my home needs to be ventilated".

On your smartphone a colour code will be displayed according to the level of CO<sub>2</sub> measured in the home:

green = very good, yellow = average and red = warning.

## Be alerted as soon as it starts to rain



"I receive an alert as soon as it starts to rain. Ideal if I've put the washing out to dry or left the windows open."

### > Netatmo Smart Rain Gauge

If I pair the Rain Gauge with my Netatmo Smart Weather Station, it gives me all the information on the rain conditions directly on my smartphone. For installation outdoors up to 100 metres from the Smart Weather Station indoor module.

"I can adapt my daily routine to the rain conditions: I can put out my plants when they need watering, I can take my umbrella or I can make plans to go out with friends."



## Pair the Smart Wind Gauge with your Netatmo Smart Weather Station and **measure the wind speed and direction**



### > Netatmo Smart Wind Gauge

Thanks to the latest ultrasound technology, the Wind Gauge measures the wind speed and direction in real time with total reliability.

"I receive an alert on my smartphone if the wind gets up."



"I can track  
my consumption  
remotely."



STAY CONNECTED

## CONTROL YOUR HOME REMOTELY



Access to real-time information on the state of your electrical installation while monitoring energy consumption, as well as interact with the rest of your connected home through Home + Control app. Take full control over your home by remotely controlling lighting, shutters, heating systems, and electrical equipments from your smartphone, by creating scenarios for instance. Compatible with Google, Apple, Alexa.

## Customise your schedules and control your consumption

### > CX<sup>3</sup> with Netatmo connected contactor

The connected contactor is multifunctional. It can replace a conventional peak/off-peak contactor, a power contactor, and also act as a time switch thanks to the scheduling function in the Home + Control app. And you can track consumption of the circuit being controlled in the app.

"I program my water heater to come on every day between 06:00 and 09:00. I know exactly how much it costs me to charge my electric vehicle, which is programmed to happen at off-peak times."



## I can **monitor the consumption of one line** in particular or **my whole home**



"No matter what electrical appliances I have in my home, I can view the overall consumption or the consumption of one circuit in the Home + Control app.

I can create schedules or customised scenarios to suit my lifestyle and adapt them directly in the Home + Control app.



### > **CX<sup>3</sup> with Netatmo connected electricity meter**

Mounted via din rail, this measures the total installation consumption or that of a specific line. Option of installing additional electricity meters to monitor the consumption of your chosen circuits (heating, power outlets, etc). "I receive a notification if the configured consumption threshold is passed."



### > **CX<sup>3</sup> with Netatmo connected latching relay**

This completes a connected installation or replaces an existing latching relay in your distribution board.

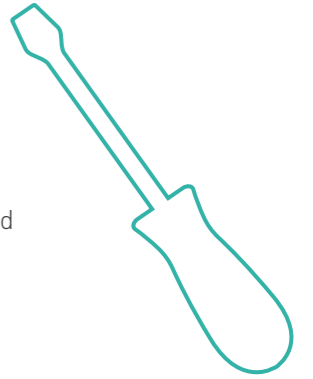
"I can switch on all the lights in my hallway in a single action or simulate a presence when I'm away from home. I can also track consumption in the app or incorporate my lights in my customised Sleep scenario."

## Would you like to monitor the **consumption** of one product?



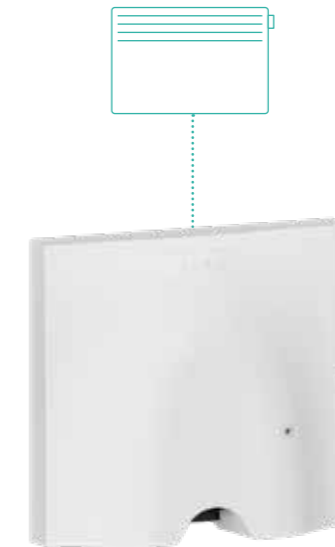
The set-up process is extremely easy.

All smart modules can be placed on the rails of any standard DIN electrical load centres and can 'mix and match' with existing non-connected modules.



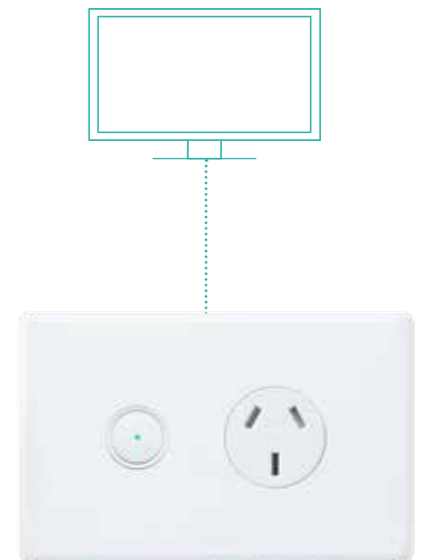
### > **Aqua Life connected power outlet**

Surface-mounted installation, weatherproof. "I can control electrical appliances remotely." Can be paired with one or more wireless switches to create a multi-way controlled power outlet



### > **Connected cable outlet**

Ideal for electric heaters or towel rail heaters. Can be controlled by a wireless switch.

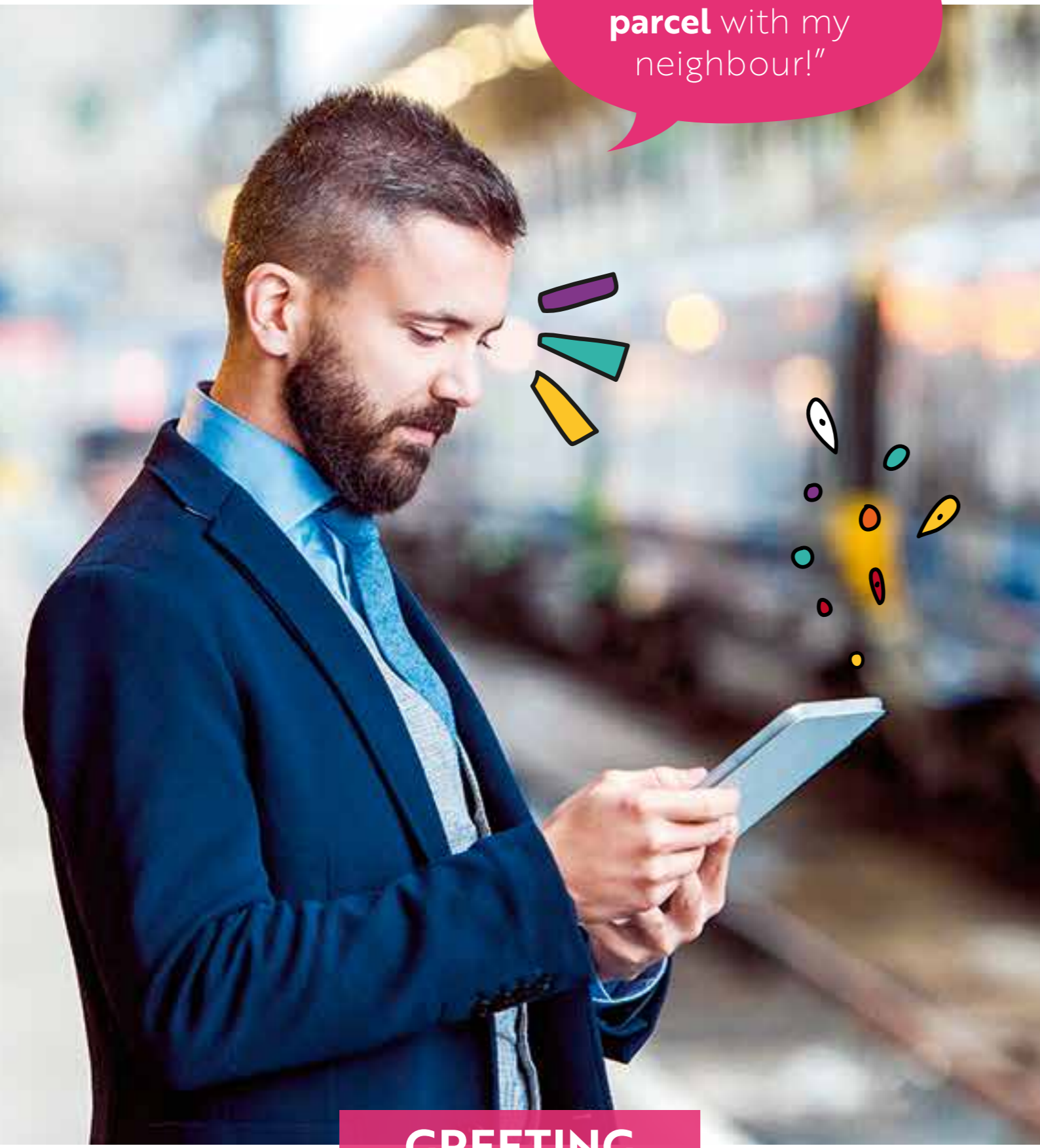


### > **Connected power outlet**

Can be paired with one or more wireless switches to create a multi-way controlled power outlet Can be installed in place of an existing power outlet.



"You can **leave the parcel** with my neighbour!"



**GREETING PEOPLE**

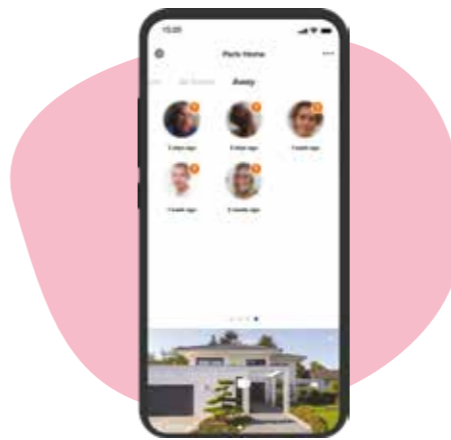
# GREET YOUR VISITORS EVEN WHEN AWAY FROM HOME



"I can watch the videos of calls and events that have happened in the Home+Security app from any device. I can scroll through the sequences and download any that are of interest to me." All the functions are accessible at any time, without subscription. Video storage and automatic backup to the Dropbox cloud or personal FTP server.



Would you like **to see and talk to your visitors** by means of a connected video door entry system?



I can see who's rung my doorbell, answer their call, open the gate for them remotely and enable other functions in the house with Door Entry apps.

The Home+Security app and the Classe 100X Door Entry app allow you to see views of inside and outside the house with Netatmo cameras.



Home + Security

Wherever you are, you're always connected to home with the Classe 100X and Classe 300EOS connected door entry systems, and Home + Security apps. Your smartphone then becomes an additional virtual video intercom via which you can speak to visitors and open a gate/door release remotely.

Are you on holiday or in the office? You can take video calls wherever you are.





> **Connected Classe 300EOS video door entry system**

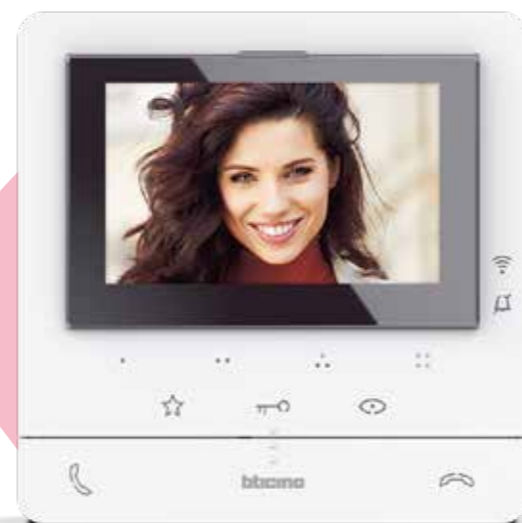
"I can see visitors, talk to them and open the gate for them remotely. If I'm away from home, my visitor can leave me a message."  
 Vertical 5" touch screen with visitor log and answering machine.  
 Surface-mounted installation  
 Compatible with Netatmo cameras.



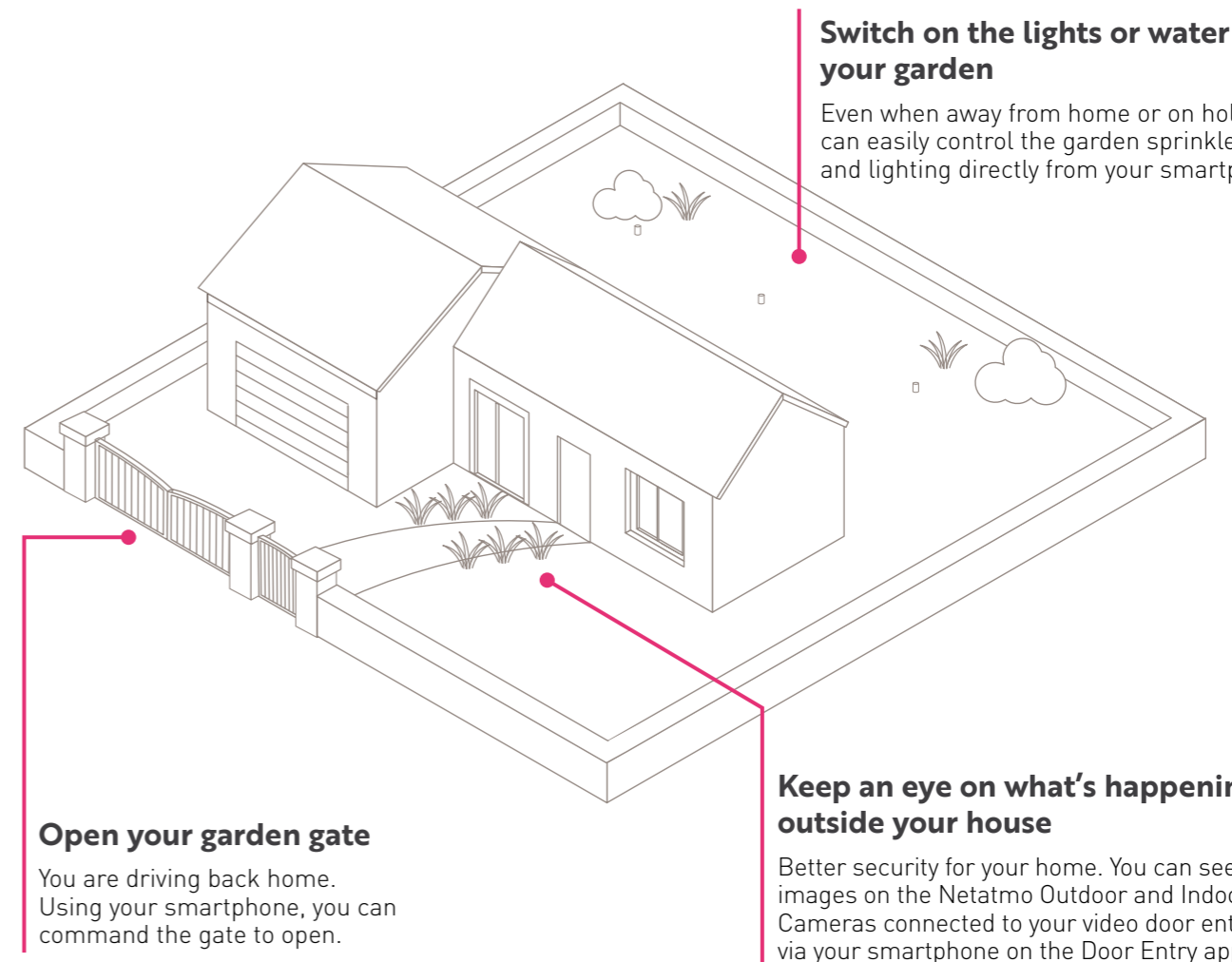
Would you like a connected video door entry system that is **simple and intuitive**?

> **Connected Classe 100X video door entry system**

"I can see visitors, talk to them and open the outer door for them remotely."  
 5" screen. Ideal for renovating old intercom systems.  
 Surface-mounted installation  
 Also available as a ready-to-install kit.  
 Compatible with Netatmo cameras.



Would you like make your everyday life **easier**?



**Switch on the lights or water your garden**

Even when away from home or on holiday, you can easily control the garden sprinkler system and lighting directly from your smartphone.

**Open your garden gate**

You are driving back home. Using your smartphone, you can command the gate to open.

**Keep an eye on what's happening outside your house**

Better security for your home. You can see the images on the Netatmo Outdoor and Indoor Smart Cameras connected to your video door entry system via your smartphone on the Door Entry app.

You're not **at home**?



> **Answer the door from wherever you are in the world**

When you're not at home, when on holiday or in the office, you can take video calls wherever you are.

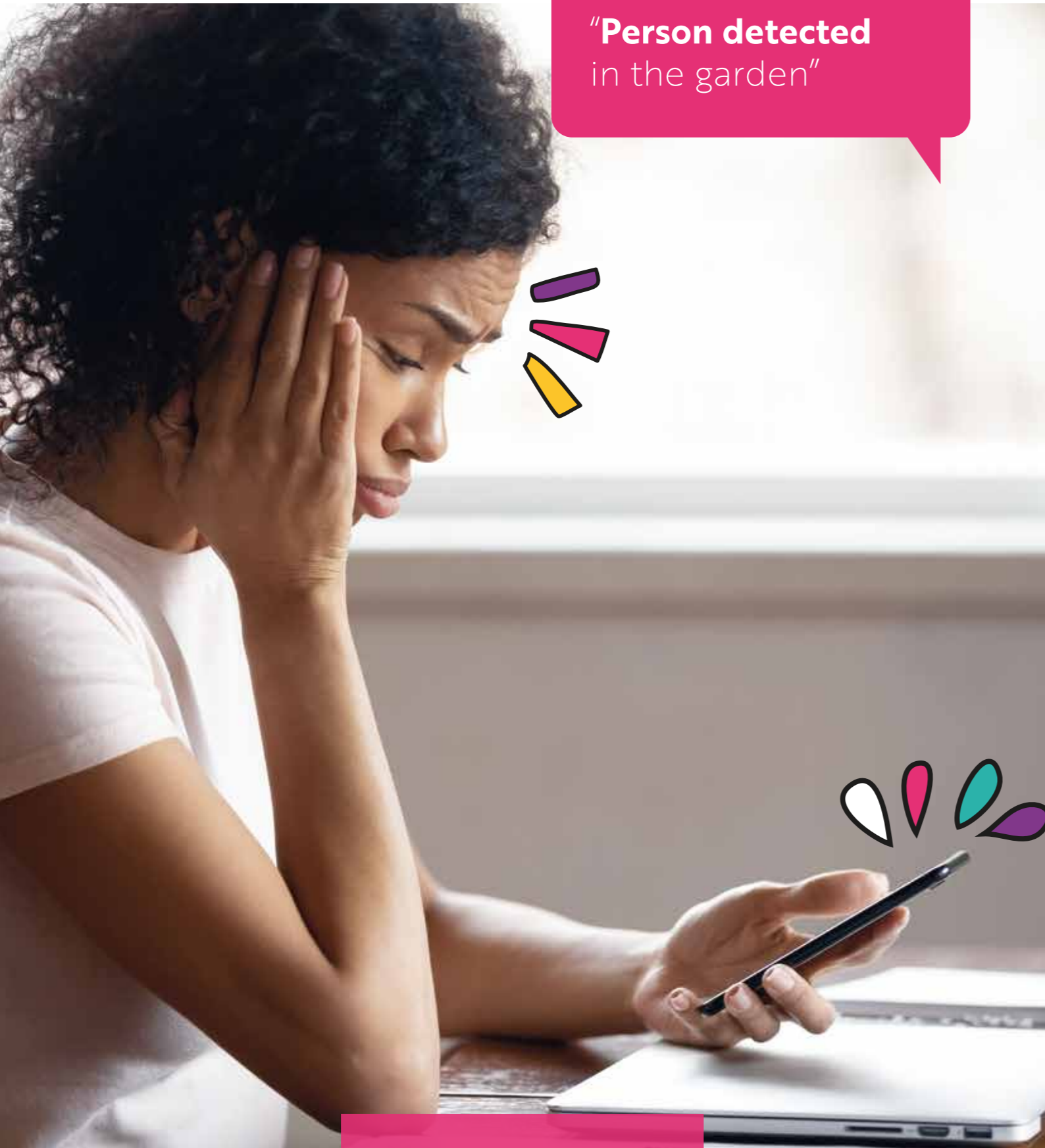


> **Call home directly**

Stay in touch with people in your house at all times. Your smartphone can communicate with your indoor video screen.



"Person detected in the garden"



SECURITY

## Better security with Smart Opening Detectors for Doors and Windows

These detect sudden opening of a door or window and alert me directly on my smartphone.



Home + Security



> **Smart Opening Detectors** for Doors and Windows  
p. 36

# KEEP AN **EYE** ON YOUR HOME AND BE INFORMED WHEREVER YOU ARE IF THERE IS AN ALERT

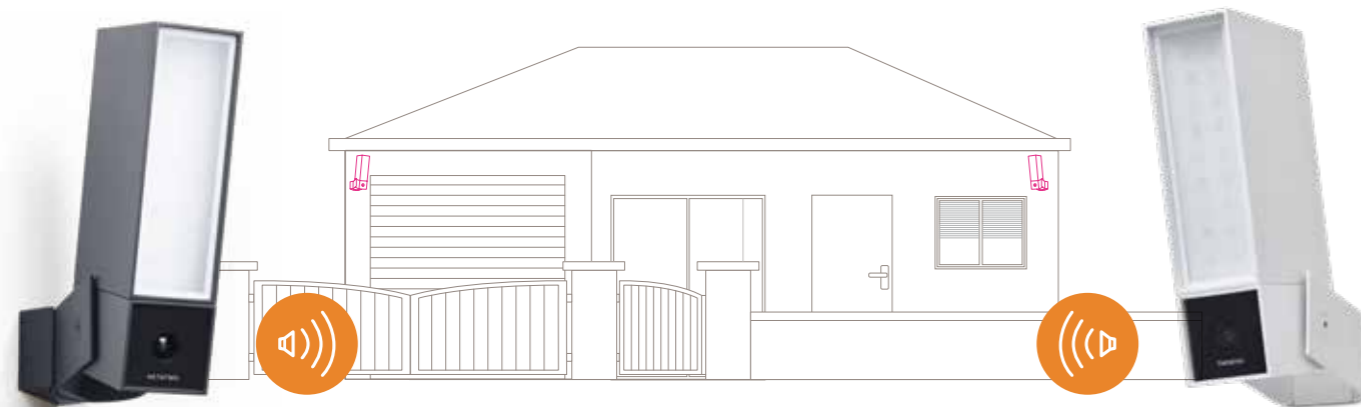


"I can be alerted and see what's happening in real time inside and outside my house, thanks to the Home+Security app."

Video storage, comprehensive functions and updates are accessible at any time, without subscription.

Protect your house inside and out with Netatmo Smart Cameras and Smart Siren. If an intruder enters your property, Netatmo products alert you in real time on your smartphone. You can pair Smart Cameras with your video door entry system and the Door Entry app.

## Be alerted in real time to what's happening **in the grounds of your home**

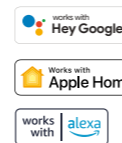


### > **Netatmo Smart Outdoor Camera with in-built siren**

The Outdoor Camera allows me to see what's happening around my front door and to monitor my garden in real time. It can distinguish between different people, animals and cars, and sends me an alert in real time if an unknown person or vehicle is detected on my property via the Home+Security app.

"I can activate the siren and its deafening 105 dB alarm directly from my app."

"The smart LED lighting system helps me get rid of intruders and can light up my path at night."



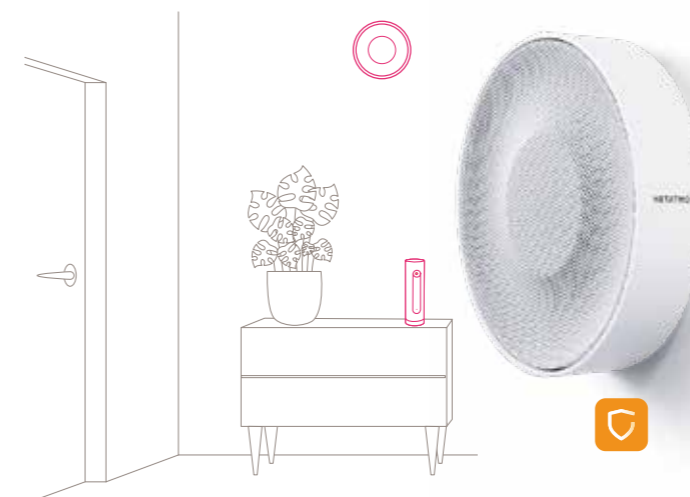
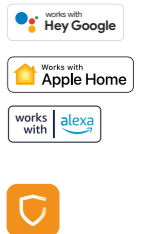
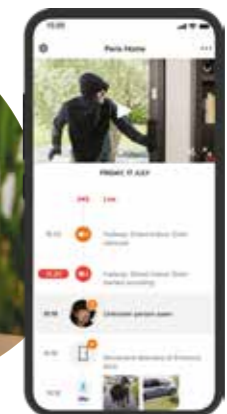
Would you like **to protect your home better** against burglars?

### > **Netatmo Smart Indoor Camera**

"Thanks to smart notifications, and with the Netatmo Security app, my Indoor Camera alerts me in real time on my smartphone, if an intruder enters."

Facial recognition and the "animal detection" function means it can tell the difference between strangers, my family members and animals.

"I can customise the notifications that matter to me. The camera also protects the privacy of my family members by allowing me to disable notifications and video recordings of these people."



### > **Smart Indoor Siren**

"I can pair the Smart Indoor Siren and the Smart Indoor Camera to protect my house better."

The Camera warns you via your smartphone if it detects an unknown person, whereas your Siren automatically activates its deafening 110 dB alarm.

Your Siren includes a whole range of pre-recorded domestic sounds to simulate presence in your house, such as barking, children crying, vacuum cleaning, etc.

Have you left the house in a hurry and forgotten to set the alarm? Don't panic! The Netatmo Smart Video Alarm System sets and unsets itself automatically whenever you leave or return home.

**+** The Siren alerts you if someone attempts to deactivate it: you receive a notification and the Siren activates its 110 dB alarm.

Would you like **to be alerted** before someone gets into your home?



> **Smart Opening Detectors for Doors and Windows**

Netatmo Smart Opening Detectors for Doors and Windows simply attach to a door or window in your home, no matter what type.

They capture any movement or vibration that could mean someone is trying to force entry. They also detect sudden opening of a door or window.

"I receive an alert directly on my smartphone when a door or window opens, to gain time in the event of an attempted burglary."



Have you just left home and you're not sure about something? **Check the open or closed status** of each door and window fitted with a Detector, directly in the app.

**100% INCLUSIVE**  
No subscription or additional charges

**100% SECURE**  
Data protected and your privacy respected

**100% UPDATABLE**  
Updates and functionality added regularly

**Prerequisite:** The Detectors only work with the Netatmo Smart Indoor Camera.



"I choose the Smart **Video Security System** for complete protection."

Netatmo Opening Detectors, Indoor Camera and Indoor Siren combine to form the complete Smart Video Security System, which protects my house and knows how to react if there is an intruder.



# Interoperability

## Voice assistants

To expand the applications for the connected devices in your home, an ever-increasing number of our products are compatible with the main commercially-available voice assistants.

	works with Hey Google	works with Apple HomeKit	works with alexa
Arteor with Netatmo	<input type="checkbox"/>	<input type="checkbox"/>	<input type="checkbox"/>
Excel Life Smart	<input type="checkbox"/>	<input type="checkbox"/>	<input type="checkbox"/>
Living Now with Netatmo	<input type="checkbox"/>	<input type="checkbox"/>	<input type="checkbox"/>
CX <sup>3</sup> with Netatmo: latching relay/contactor/gateway power module	<input type="checkbox"/>	<input type="checkbox"/>	<input type="checkbox"/>
Netatmo Outdoor and Indoor Smart Cameras	<input type="checkbox"/>	<input type="checkbox"/>	<input type="checkbox"/>
Smarter with Netatmo Thermostats	<input type="checkbox"/>	<input type="checkbox"/>	<input type="checkbox"/>
Netatmo Weather Station	<input type="checkbox"/>	<input type="checkbox"/>	<input type="checkbox"/>

iOS: Legrand's "with Netatmo" solution requires an iPhone, iPad or an iPod Touch

To control this HomeKit-compatible accessory, we recommend using the latest version of iOS or iPadOS.

In order to control this HomeKit accessory automatically from outside the home, you need a HomePod, Apple TV or iPad configured as a hub. It is advisable to update to the latest version of both the software and the operating system.

iPhone, iPod and iPad are trademarks of Apple Inc, registered in the United States and other countries. App Store is a trademark of Apple Inc, registered in the United States and other countries. HomeKit and iPadOS are trademarks of Apple Inc. iOS is a trademark of Cisco registered in the United States and other countries and used under licence.

ANDROID: Android 5.0 minimum required with Google Play access.

WEBAPP: PC & Mac

Google, Android, and Google Play are trademarks of Google LLC

Amazon, Alexa and their associated logos are trademarks of Amazon.com, Inc. or its subsidiaries.

## An ever-evolving open system

Arteor™ with Netatmo, Living Now with Netatmo and Excel Life Smart systems are open to all players in the connected home market.



DIGITAL HUB



La Poste app



# The legrand cloud and data security



## The cloud and access to connected solutions

The Legrand Cloud **hosts, manages and keeps secure** all the data needed to access connected solutions:

- installation data and user identities
- usage data

The Legrand Cloud has been developed as part of **the Microsoft Azure solution**, a world leader in the cloud: a scalable system, with huge capacity for growth and new user experiences.

## Data security and protection of privacy

The Legrand Cloud guarantees data security and protection of privacy. Legrand complies with the **unified security standard ISO 27001**, which is the benchmark in terms of data security.

Legrand is implementing **PIAs: Privacy Impact Assessments**. These involve a methodology drawn up by the French Data Protection Authority (CNIL) which is designed to ensure that users' privacy is respected by taking a systematic approach to how their data is used.

Legrand **also ensures that no outsiders can hack** into IT systems in order to steal, alter or destroy data. Security audits and penetration tests are constantly conducted by trusted cybersecurity companies.



## Legrand is committed to complying with the GDPR<sup>(1)</sup>

- By accepting users' right to be forgotten
- By strengthening consumer consent procedures
- By conducting PIAs (see above)

<sup>(1)</sup> General Data Protection Regulations (GDPR): European regulations concerning personal data which came into force on 25 May 2018.

### Connecting my home



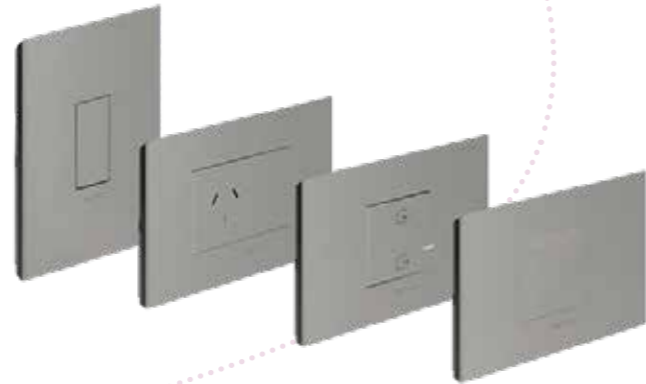
Excel Life Smart



CX<sup>3</sup> with netatmo



Living Now with Netatmo



Arteor with Netatmo

### Lighting



Excel Life Smart



Arteor with Netatmo



Living Now with Netatmo



CX<sup>3</sup> with netatmo



HPM Smart Downlights

### Shutters/Blinds



Excel Life Smart



Arteor with Netatmo



Living Now with Netatmo

### Greeting People



Bticino Classe 100



Bticino Classe 300EOS

### Managing Consumption



CX<sup>3</sup> with Netatmo

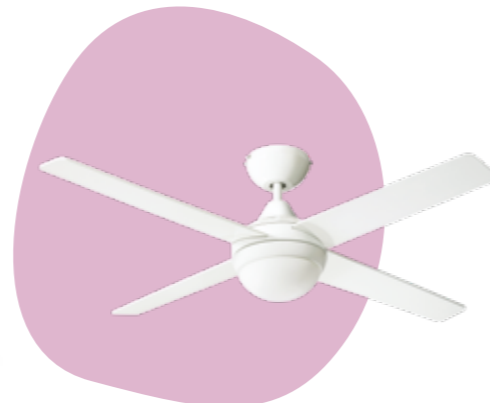
### Well being



Smarter with Netatmo



Netatmo Smart Weather Station



HPM Sweep Fan

### Security



Netatmo Smart Indoor Camera



Netatmo Smart Outdoor Camera



Netatmo Smart Tags Indoor Camera



Netatmo Smart Siren



**IMPROVING LIVES BY  
TRANSFORMING THE  
SPACES WHERE PEOPLE  
LIVE, WORK AND MEET**



**Legrand Australia**  
Building 4 Nexus Industry Park  
43-47 Lyn Pde Prestons NSW 2170  
1300 369 777  
[www.legrand.com.au](http://www.legrand.com.au)

**Legrand New Zealand**  
106-124 Target Road Glenfield  
Auckland 0627 New Zealand  
0800 476 009  
[www.legrand.co.nz](http://www.legrand.co.nz)